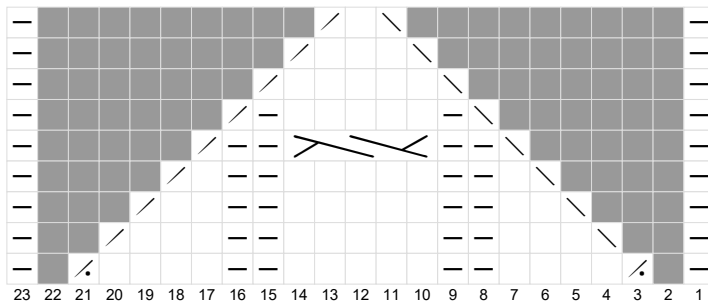
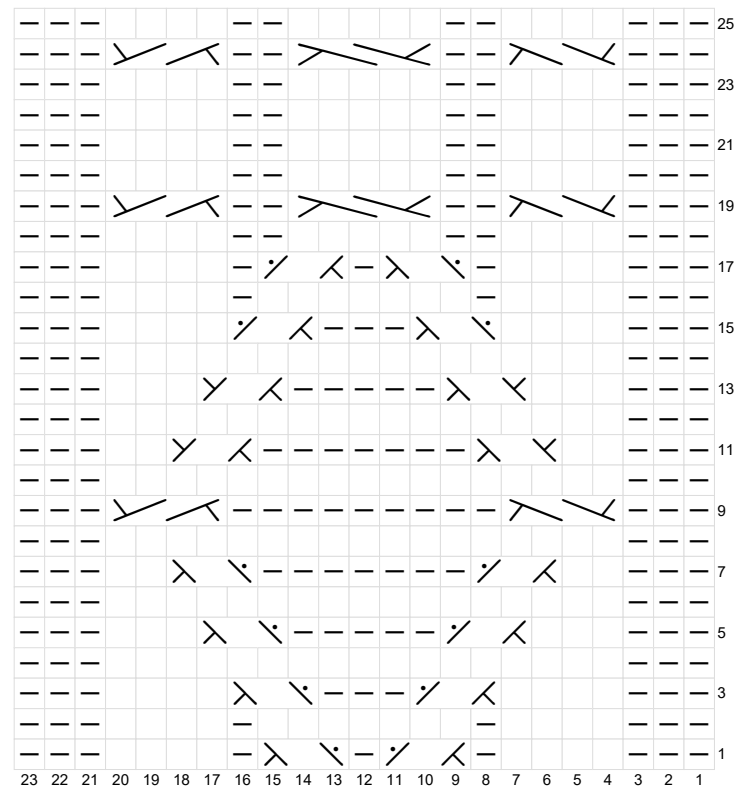




TYRNI-LAPANEN, KAAVIO 2 / KÄRKIKAVENNUS








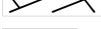

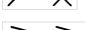





TYRNI-LAPANEN, KAAVIO1 / PALMIKKO



Neuleohje Tyrni-lapaset

Klassisten palmikkolapasten ohjeen löydät seuraavalta aukeamalta.

MERKKIEN SELITYKSET

-  oikea silmukka
-  nurja silmukka
-  1 s apupuikolle taakse, 2 o, apupuikolta 1 n
-  2 s apupuikolle eteen, 1 n, 2 s apupuikolta oikein
-  2 s apupuikolle eteen, 2 o, 2 s apupuikolta oikein
-  2 s apupuikolle taakse, 2 o, 2 s apupuikolta oikein
-  2 s apupuikolle eteen, 1 o, 2 s apupuikolta oikein
-  1 s apupuikolle taakse, 2 o, 1 s apupuikolta oikein
-  2 s apupuikolle eteen, 1 s apupuikolle taakse, 2 o, 1 s oikein apupuikolta takaa, 2 o apupuikolta edestä
-  2 nurin yhteen
-  ei silmukkaa
-  2 oikein yhteen
-  ylivetokavennus